

# CERTIFICATE OF LOCATION OF GOVERNMENT CORNER

NORTH QUARTER Corner of Section 7, Township 107, Range 42, 5TH P.M.

STATE OF MINNESOTA, County of MURRAY

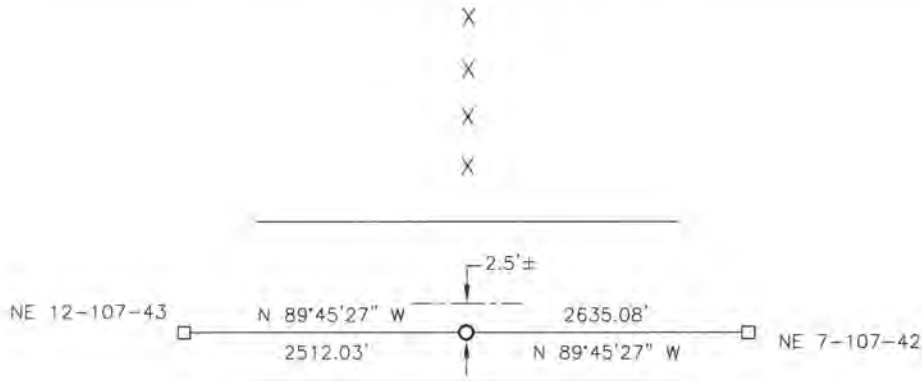
At the corner location shown on the sketch:

On \_\_\_\_\_ found a \_\_\_\_\_

left monument as found,  lowered monument,  removed monument (explain)

On 01-24-2017 placed a 5/8" IRON WITH SEAL #50343.

### SKETCH OF REFERENCE TIES



X  
X  
X  
X

X  
X  
X  
X


Minnesota State Plane Coordinate  
System Murray County Datum  
NAD83 (1996)

N: 190058.464  
E: 456072.676

Corner is 2.5'± south of the centerline of the road.

Statement of evidence relative to this corner location is on back of page.

I hereby certify that this document and the data contained herein was prepared by me or under my direct supervision.

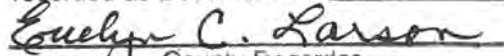
  
SIGNATURE \_\_\_\_\_ DATE 2/19/18

Registration No. 50343

Land Surveyor,  Professional Engineer  
 County Surveyor,  County Engineer

STATE OF MINNESOTA, }  
COUNTY OF MURRAY, } ss.

I hereby certify that the within Instrument was filed in this office for record on the 26<sup>TH</sup> day of MARCH A.D. 20 18 at 9:00 o'clock A. M. and was duly recorded as Document No. \_\_\_\_\_

  
County Recorder

## Statement of Evidence

In 1861, L.G.M. Fletcher did the original subdivision of the township.

On January 24, 2017, Bueltel-Moseng Land Surveying set a 5/8" iron with seal #50343 on line between section corners and in line with the fences to the north and south. It is 2.5'± south of the centerline of the road.